

METAL & CABLE CORP., INC.

METAL & CABLE CORP., INC.
9337 Ravenna Rd., Unit C
800-735-4051 / www.metal-cable.com

EDITORIAL CONTACT:
Ray Farrar / Method Media LLC
(216) 861-0862 / rayf@methmedia.net

SIDE-OF-TANK MOUNTING SOLUTION:

MAGNEMOUNT SIDE-TANK MOUNT ANTENNA SYSTEM SOLVES SPACE, LOGISTICS, AESTHETICS, AND EPA ISSUES.

Twinsburg, OH-APRIL 2011

As the cell phone industry continues in its progressive growth trajectory, the congestive nature of installing and mounting carrier antennas on top of water tower tanks will increase as well. Space is becoming limited upon most tower-tops and handrails as carriers vie for optimal signal positioning and more viable options are being sought out as the inevitable logjam issue ensues.

That was the case recently with the nation's fourth-largest wireless carrier T-Mobile (Bellevue, Washington) for its planned antenna installation at the City of Steubenville (Ohio) Water District's 131 foot tank as the city mandated that they find an alternative way to mount their antennas on the tower's four side sectors (alpha/beta/gamma/delta). Space issues notwithstanding, the city also desired a less obtrusive aesthetic solution to appeal to the local population. In addition to finding a suitable mounting solution to this unusual specification, T-Mobile and their installation/electrical contractor Speelman Electric, Inc. (Tallmadge, OH) were faced with a tight timeline for project completion—begin in mid-December 2010 and complete by January 2011.

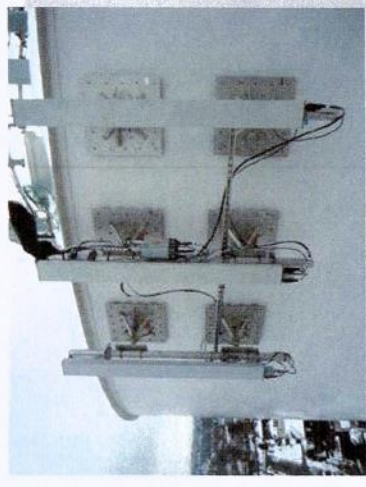
T-Mobile's Construction Manager Keith McCombs and Speelman's Field Coordinator Jason Hughes immediately ruled out welding as an option as it could present potential EPA issues involving maintaining the integrity of the tank's membrane seals and could involve costly and time consuming draining of the tank. Epoxy mounting was also eliminated due to questions about the durability of the bond under winter's extreme atmospheric elements. Additionally, Capacitor Discharge (CD) welding was dismissed as time consuming because of the amount of CD's required; also Speelman would have to go back to the job in the Spring to touch-up the powder paint around the studs since it could not be applied during the cold months.

MAGNETIC SIDE-MOUNT SOLUTION / SPECIFICATIONS:

Finally, T-Mobile contacted Metal & Cable Corp., Inc. (Twinsburg, OH) who had developed a patented, non-invasive, high-capacity magnetic solution called the Magnemount Antenna System. Engineered with a series of permanent magnets combined with an independently suspended mounting system, the Magnemount system (Patent No.7,624,957) provides a non-invasive solution to adhering to the steel surfaces and varying curvatures of water towers— including the side sectors. Entirely magnetic, it requires no epoxy coating or invasive welding which could adversely affect a water tank's protective surface coatings and bladder seals.

Available in five (5) modifiable designs, and featuring a lifetime warranty on all magnets, Metal & Cable Corp.'s new Magnemount Side-Tank Mount (M-STM) design provided all parties with a viable option to install twelve antenna mounts efficiently within a rigid deadline and is comprised of the following footprint:

- 12 Total M-STM: 6 base-plates on 4 water tank sectors (alpha/beta/delta/gamma) holding 3 antennas each
- 90° Center Mast / Base Plate (24" x 24" square footprint / Uses up to 120 magnets)
- 300 grade stainless steel and anodized aluminum construction
- 150 MPH wind speed capacity—5.5 ft² wind surface area



Magnemount Side Tank Mount

METAL & CABLE CORP., INC.

SWIFT SIDE-MOUNT ASSEMBLY:

The M-STM's cost efficient profile offers a quick, clean installation which requires no welders, painters, or special tools. Assembly begins on the ground for each installation as each base plate is mounted to a horizontal shank that attaches to the vertical mast with u-bolts which are tightened to securely hold the final antenna pipe and assembly.

After a swift hoist up the water tower with bearing and rope, installers simply pick a desired surface location and place the base plate. The magnets are then loosened-up to automatically orient themselves to their maximum capacity. The lock-nuts on each magnet need only one turn with a hand wrench to secure the mount in place. Once secured, the antenna is mounted and the installation is completed—typically in less than 1 hour.

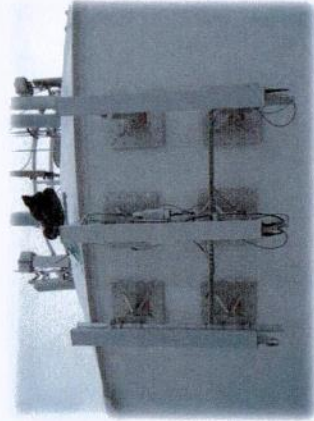
RESULTS / CONCLUSION:

Ultimately, all 12 of the M-STM antennas took only one day to install. Factoring in Speelman's additional civil and electrical work (cell infrastructure, coax cable feeds, magnetic supports to the mounts, etc.) the T-Mobile tank installation project was completed in approximately two weeks—meeting the Steubenville Water District's stringent deadline.

According to Speelman's Jason Hughes, "Considering that we were installing in the winter the Magnemount Side-Tank Mount was easy to install, is low maintenance, and presents no corrosive rust issues. Most importantly, it eliminated all the issues we were facing early on regarding welding—like fire safety and maintaining tank membrane lining integrity."

T-Mobile's Keith McCombs noted the systems' quick installation time stating, "This will allow us to avoid future headaches associated with water tanks; especially when you factor in speed to market for the customer experience. Additionally, they look nice and clean; blending in well for community aesthetics."

To date, the high-capacity Magnemount system has had no reported service failures or returns in six years of existence. Additionally, an unlimited lifetime warranty is given on all magnets and five years on the complete system. Both warrantees offer 100% free replacement or refund which includes freight (both ways).



CORPORATE PROFILE:

Since 1981, Metal & Cable Corp., Inc. has been an innovative manufacturer and distributor "hard-to-find" and custom made metals, and electrical wire and cable. The invention of the patent-pending Magnemount mounting system by Metal & Cable's President, David Klein, represents a major advancement in steel water tank antenna and cable tray mounting. Headquartered in Twinsburg, Ohio, Metal & Cable's progressive growth has been achieved through its commitment to its customers and continued dedication to innovation in a myriad of related markets.

For more detailed information, visit the Metal & Cable Corp., Inc. web site at:

www.metal-cable.com or call: 800-735-4051

© 2011 Metal & Cable Corp., Inc. ### All rights reserved.

